

The Reference Model

Army

Sam Easterby-Smith
se5@bolton.ac.uk

Sample User Agents

Assignment marking tool	Authoring applications	Library System	Portal
Student Enrolment Portlet	Timetabling	VLE / LMS	

Learning Domain Services

Activity Author	Activity Management	Assessment	Competency
Course Management	Course Validation	Curriculum	Grading
Learning Flow	Marking	Personal Development	Quality Assurance
Reporting	Resource List	Sequencing	Tracking
ePortfolio			

Common Services

AV conferencing	Alert	Archiving	Authentication
Authorisation	Calendaring	Chat	Content Management
Context	DRM	E-mail management	Federated Search
Filing	Format Conversion	Forum	Group
Harvesting	Identifier	Logging	Mapping
Member	Messaging	Metadata Management	Metadata Schema Registry
Packaging	Person	Presence	Rating / Annotation
Resolver	Role	Rules	Scheduling
Search	Service Registry	Terminology	User Preferences
Whiteboard	Workflow		

a “Reference model” is...

- An abstract task model of what has to be accomplished to meet the **user needs**, described in a way that is independent of how it is accomplished
- The description of the chosen means of implementing this model

JISC funded models...

<http://www.eframework.org/refmodels/>

COVARM

Course Validation Reference Model
(Thames Valley University)

XCRI

eXchanging Course-Related Information
(Manchester Metropolitan University)

LADIE

Learning Activity Design in Education
(Southampton University)

FREMA

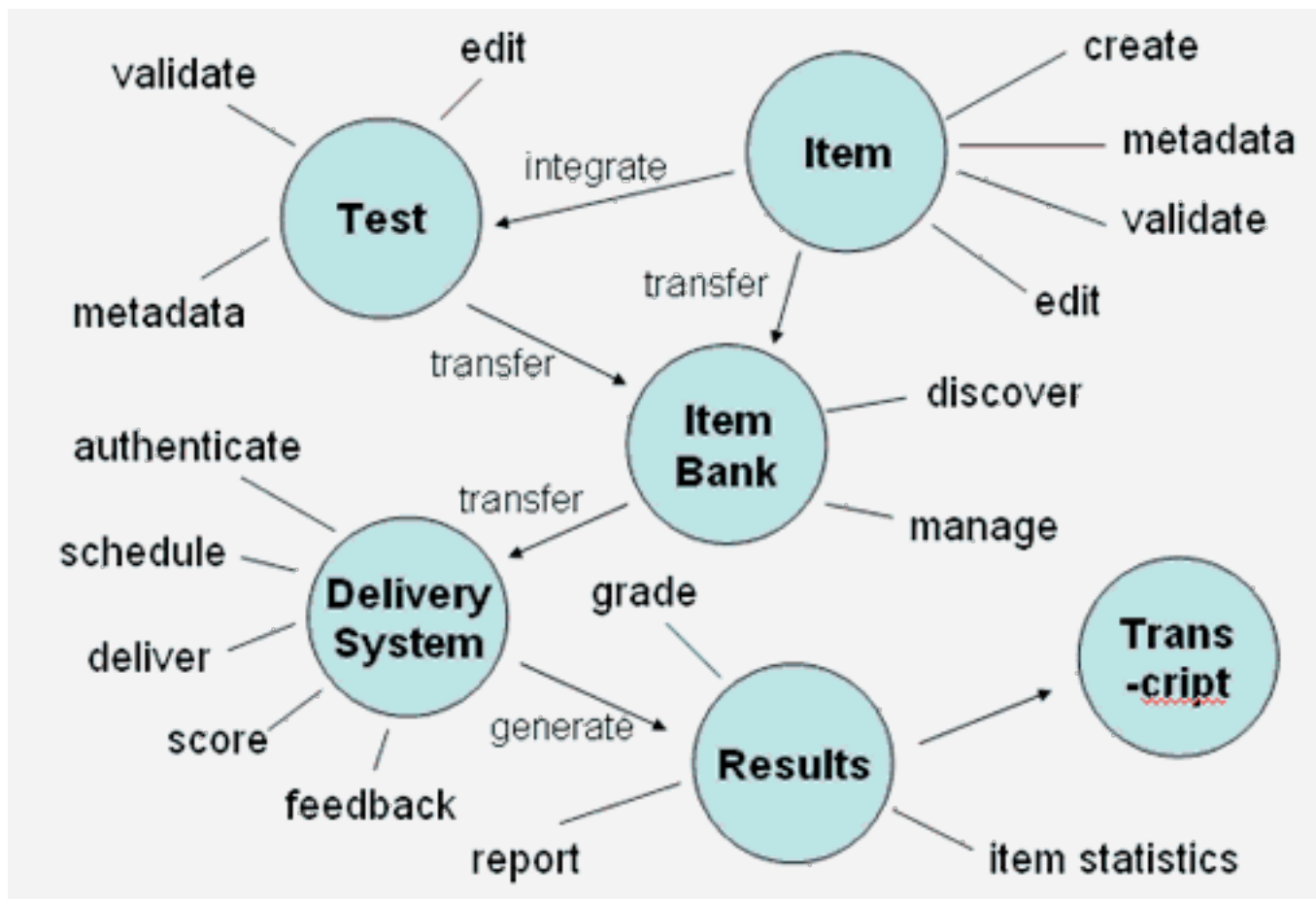
e-Learning Framework Reference Model for Assessment
(Southampton University)

ePortfolio for Lifelong learning

(Nottingham University)

FREMA's concept maps

<http://www.frema.ecs.soton.ac.uk/>



FREMA's Magic Pyramid

<http://www.frema.ecs.soton.ac.uk/>

Implementation

Service Definitions

Generating Use Cases

Mapping Available Technologies

Who gives you XCRI?

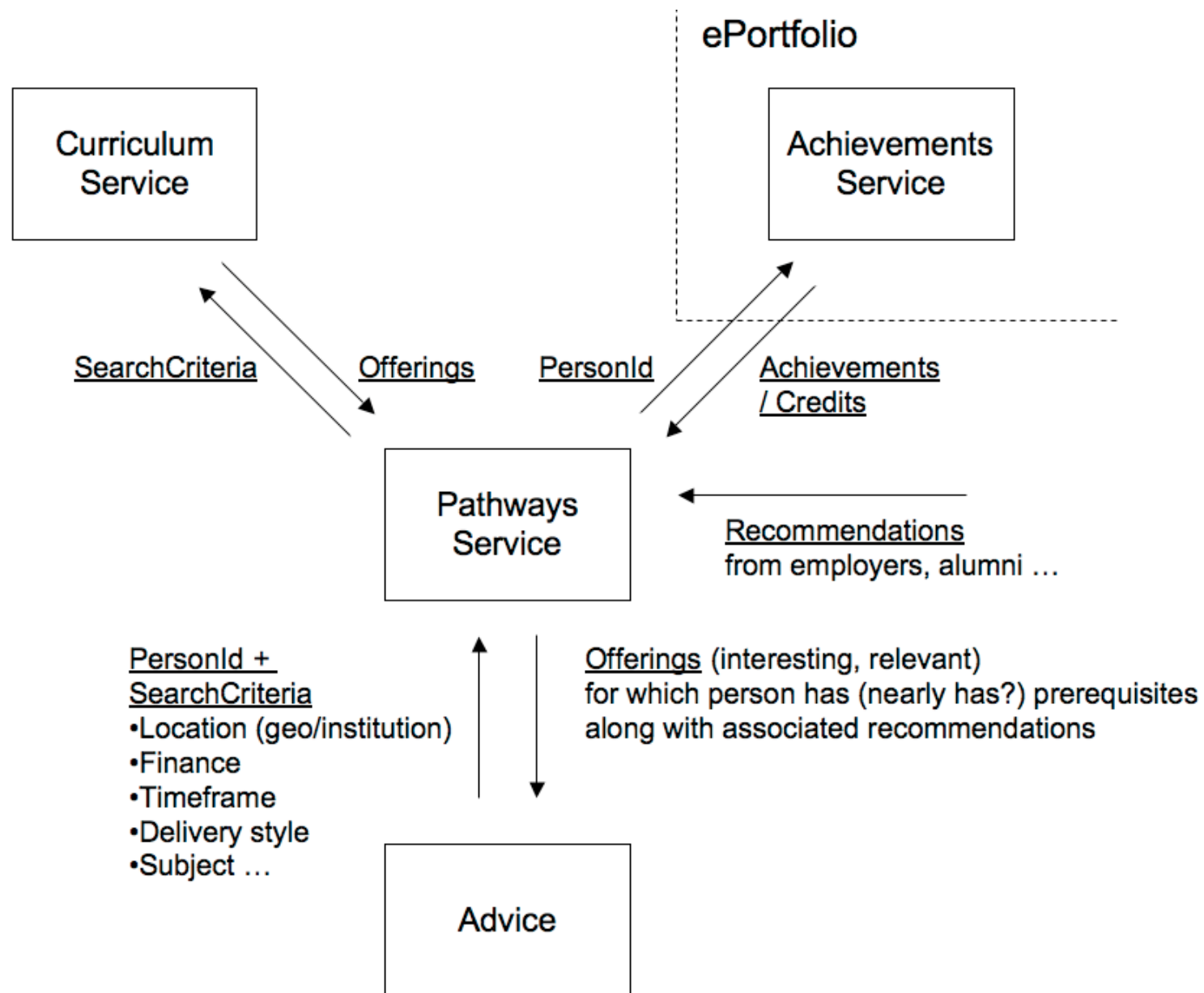
<http://www.elframework.org/projects/xcri/>

Aim: to define a vocabulary and appropriate technology bindings (e.g. XML, RDF) for describing course-related information that encompasses course marketing, quality assurance, enrolment and reporting requirements.

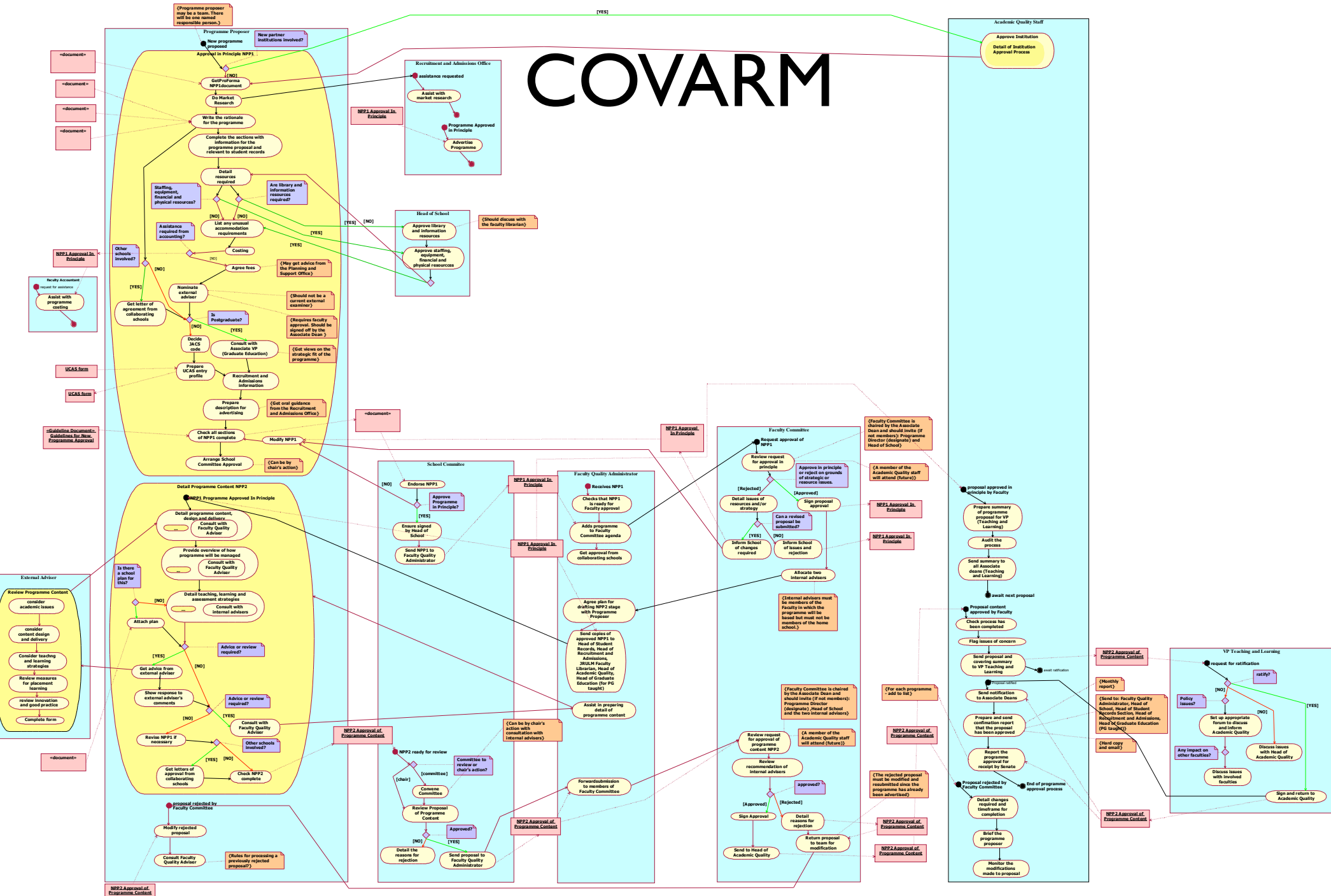
deliver: vocabulary | technology bindings

scope: course marketing | quality | enrolment | reporting

approach: informed compromise | useful tools



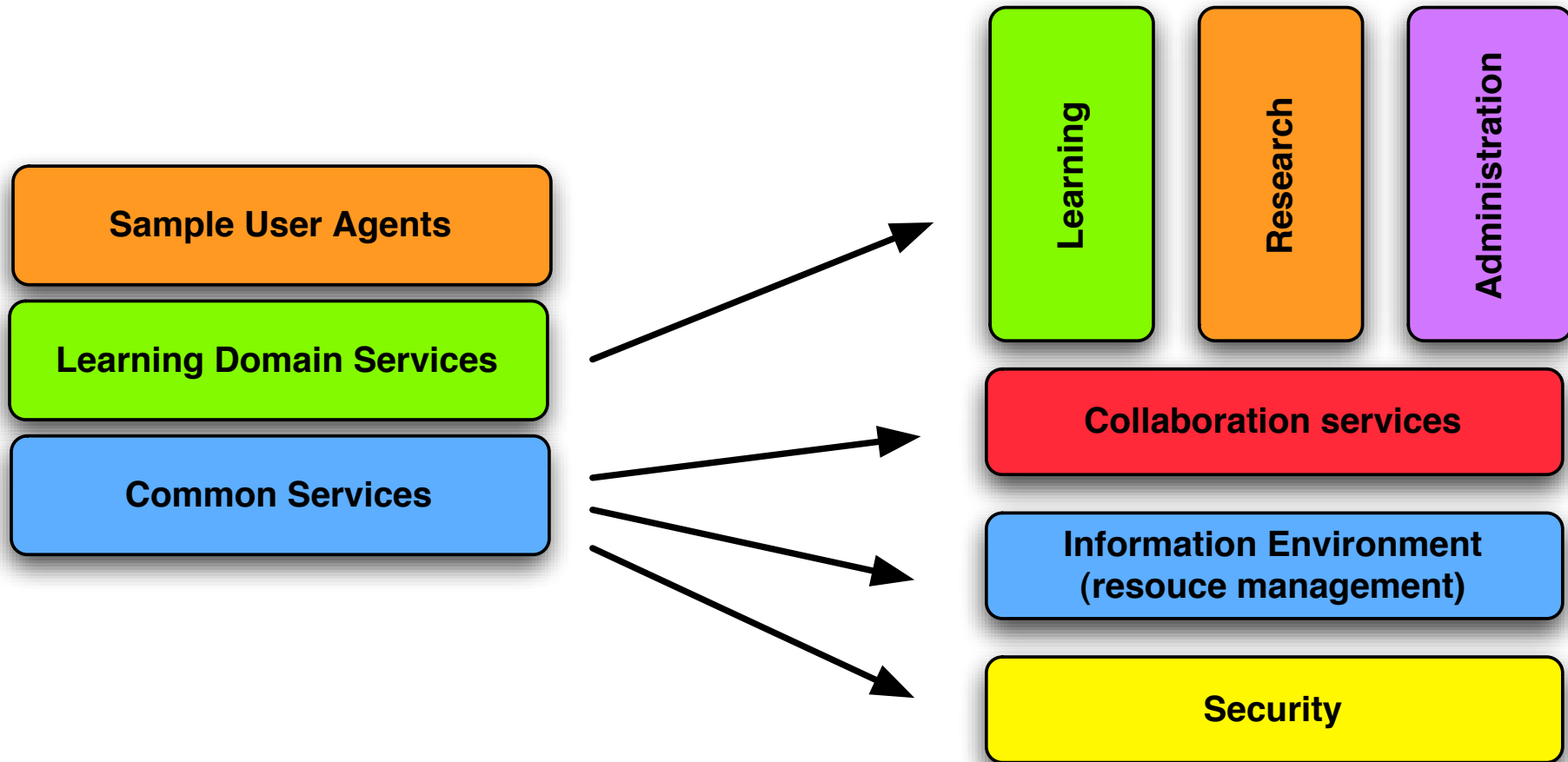
COVARM



The e-Framework

Tish Roberts

From ELF to e-Framework...



What is the e-Framework?

- Initiative by the U.K's Joint Information Systems Committee (JISC), Australia's Department of Education, Science and Training (DEST) and partners
- Will produce an evolving and sustainable, open standards based service-oriented technical framework to support the education and research communities
- This means:
 - Mapping current standards and developments
 - A common vocabulary and technical approach
 - A set of development projects (toolkits, demonstrators, reference models)
 - Pointers to a set of resources
 - A place to collaborate, share and discuss

- The adoption of a service oriented approach to system and process integration
- The development, promotion and adoption of Open Standards
- Community involvement in the development of the e-Framework
- Open collaborative development activities
- Deployment of the e-Framework

How can you be involved now?

- Join the email list
e-framework@jiscmail.ac.uk
- Visit web site www.e-framework.org
- Get involved with CETIS Special Interest Groups (www.cetis.ac.uk)